

LD-2C50-H

Using instruction

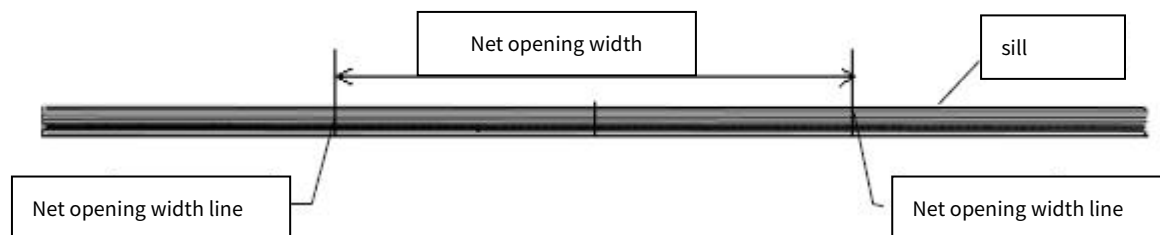
Using instruction

All rights reserved.

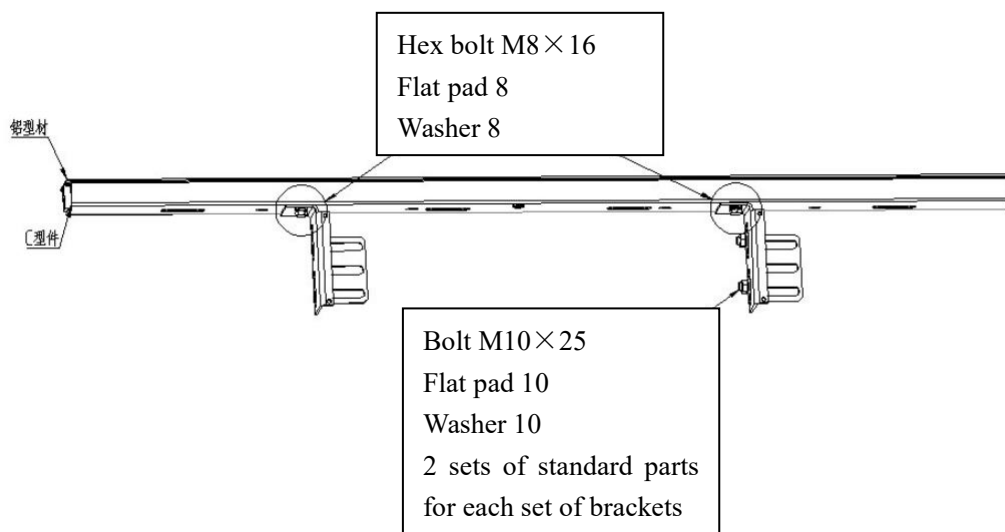
The information in this document is subject to change without notice. No part of this document, including electronic, mechanical, micro-coping, photocopying, recording or otherwise, may in any form or by any means be reproduced, stored in a retrieval system or transmitted without prior written permission from our company.

Installation instructions for sill

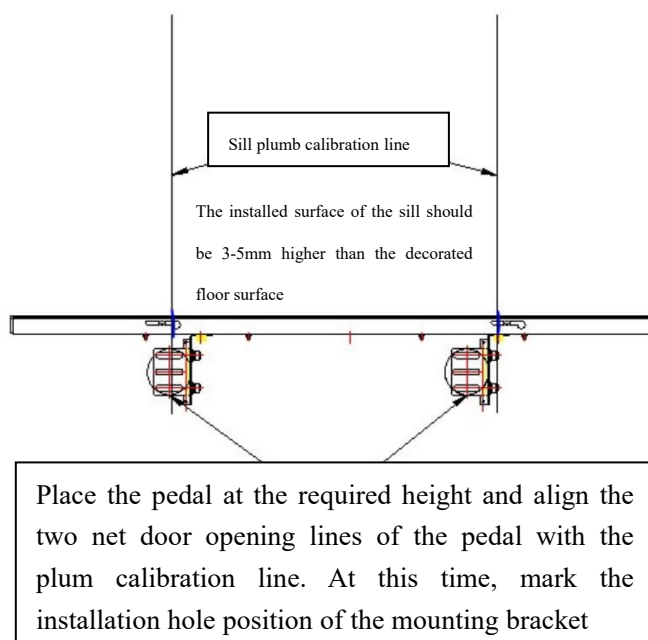
1. Draw the net opening width line and net opening center line on the sill



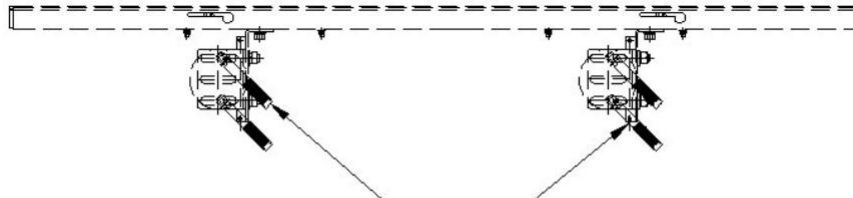
2. Connect the sill and brackets



3. Determine the position of the mounting holes for the brackets at both ends and make a mark at this position. As shown in the following figure

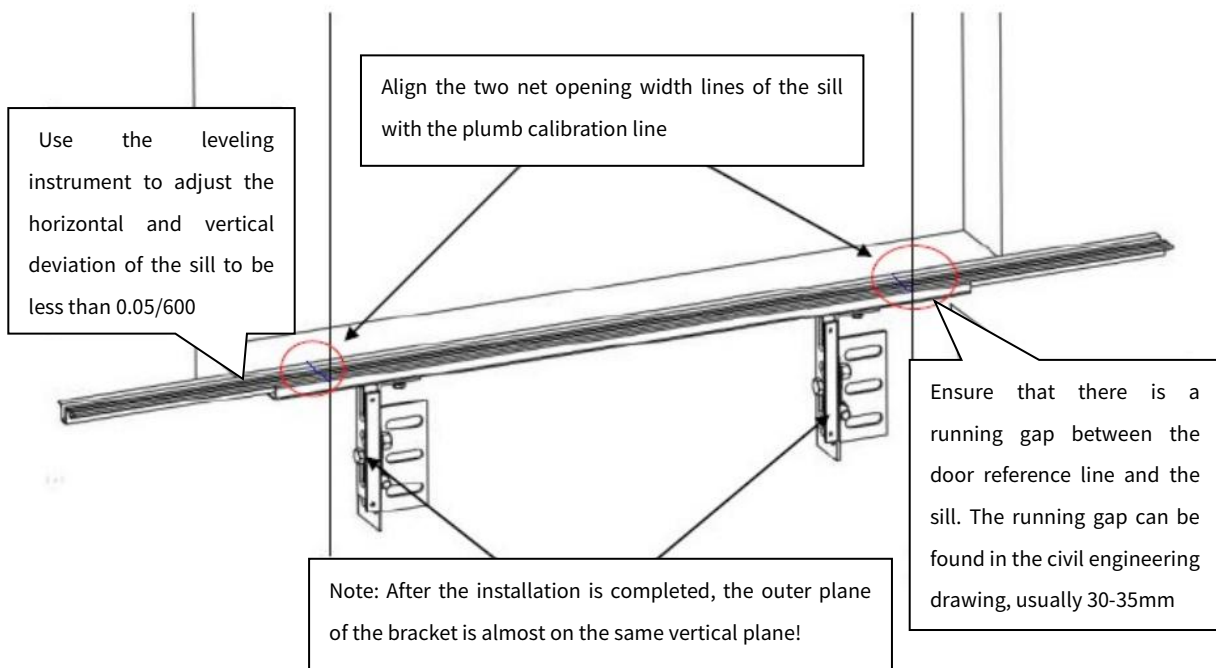


4.Remove the sill and brackets at both ends, drill holes on the marks with an impact drill, and install expansion bolts. As shown in the following figure

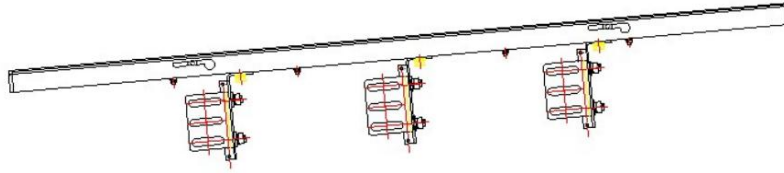


Expansion bolt M10X100, 2 expansion bolt for each set of sill brackets
When it is a steel structure, replace the expansion bolt with a regular bolt M10X30

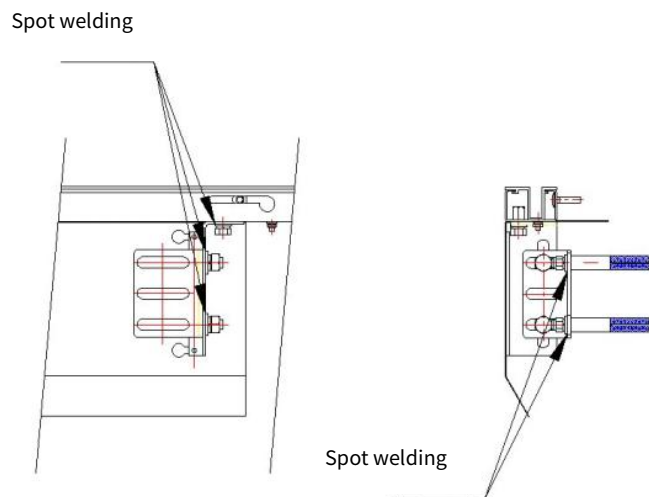
5.Fix the brackets at both ends and make adjustments



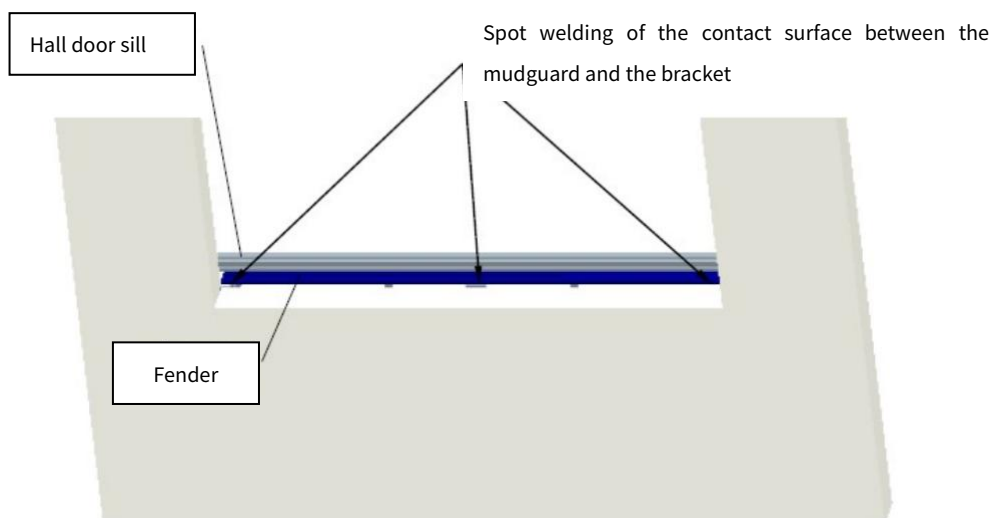
6、 Install the middle bracket as shown in the following figure



7、 After adjustment, lock all bolts tightly and weld the adjustable components with electric welding (as shown in the figure below). The welded areas should be repainted with paint.



8、 Fender installation as shown in the following figure

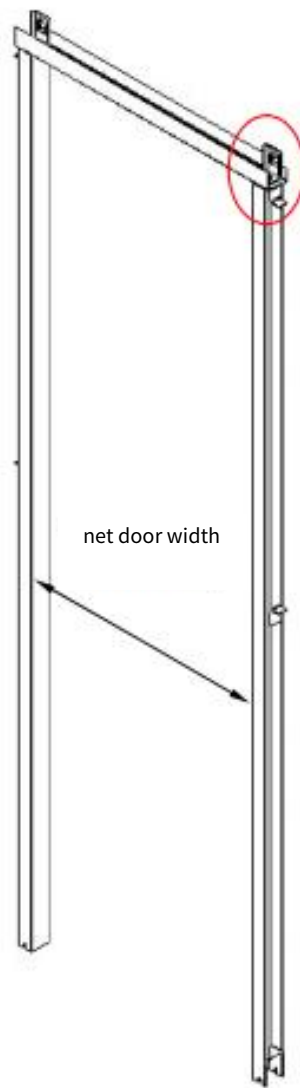


Installation instructions for hall door jamb

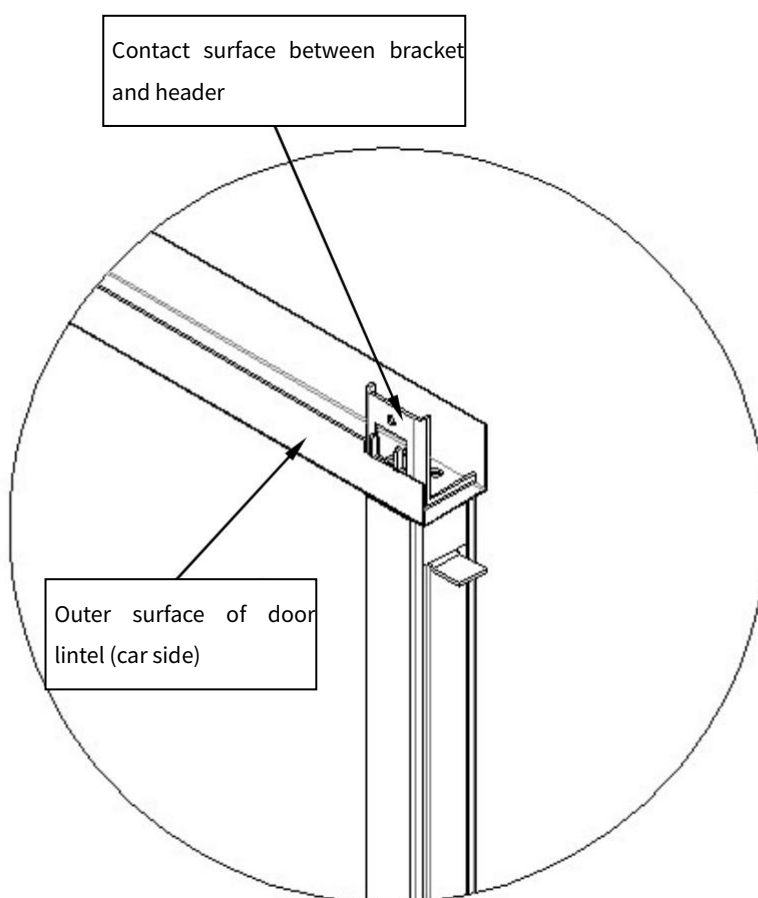
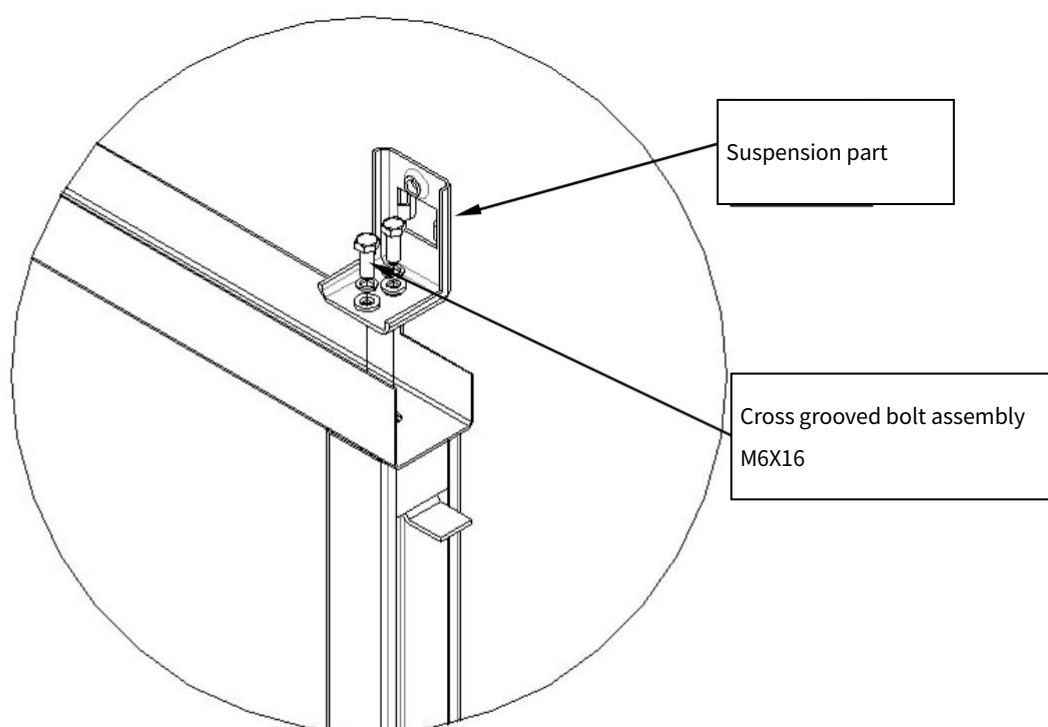
- 1、 Assemble Jamb components at the entrance of the hall.

Pay attention to jamb assembly:

- a.After the jamb is assembled, the inner width of the jamb must be consistent with the net door width, and the deviation should be within 2mm;
- b.The connecting surface of the jamb's lintel and the column shall be kept on the same plane, and the steps shall not be greater than 0.5mm;
- c.The jamb should be perpendicular to the lintel.

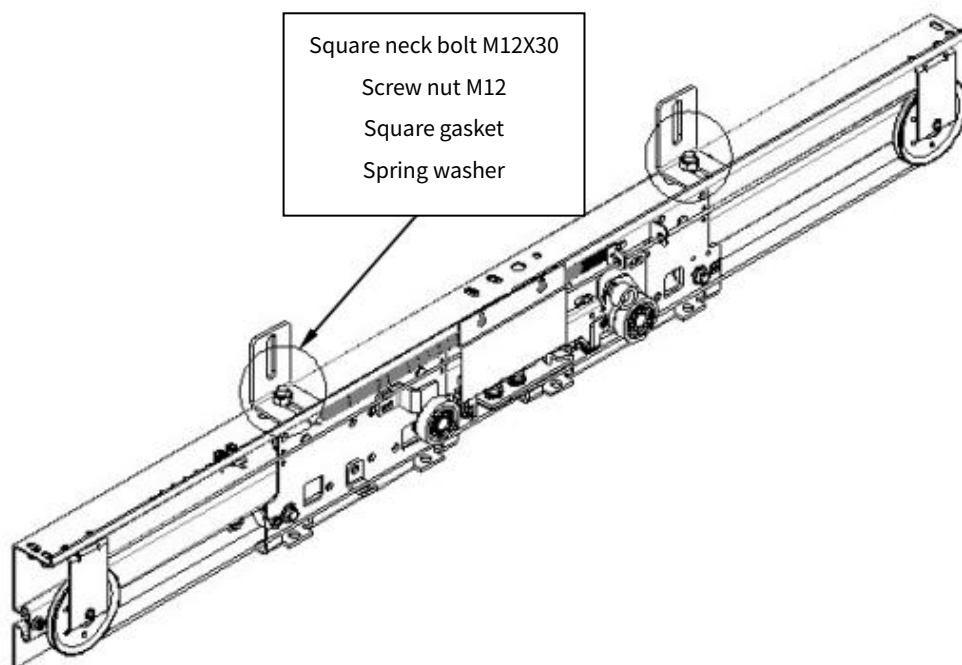


2、 Fix the lower end of Jamb to the sill with bolts

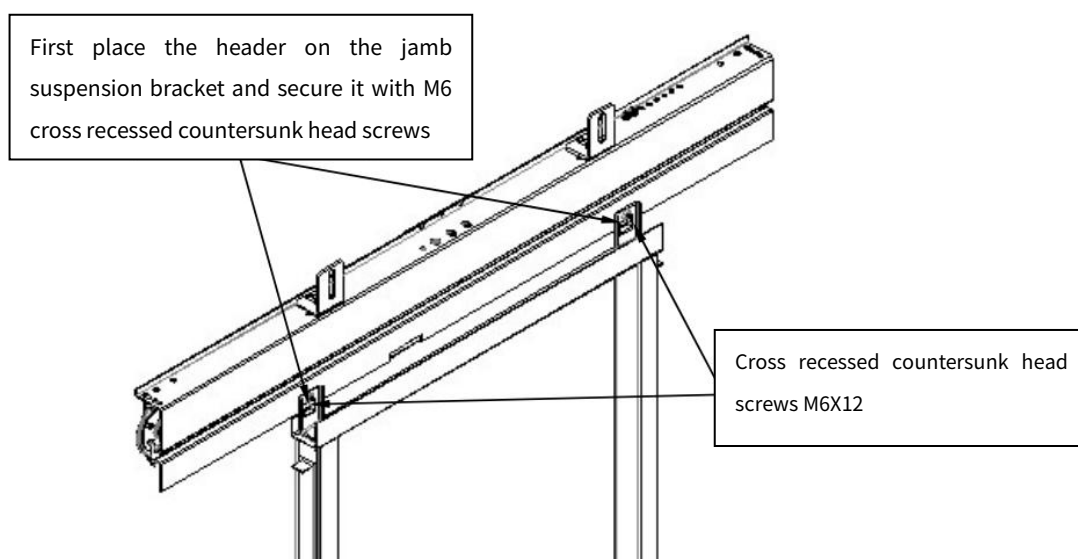


Installation instructions for hall door header

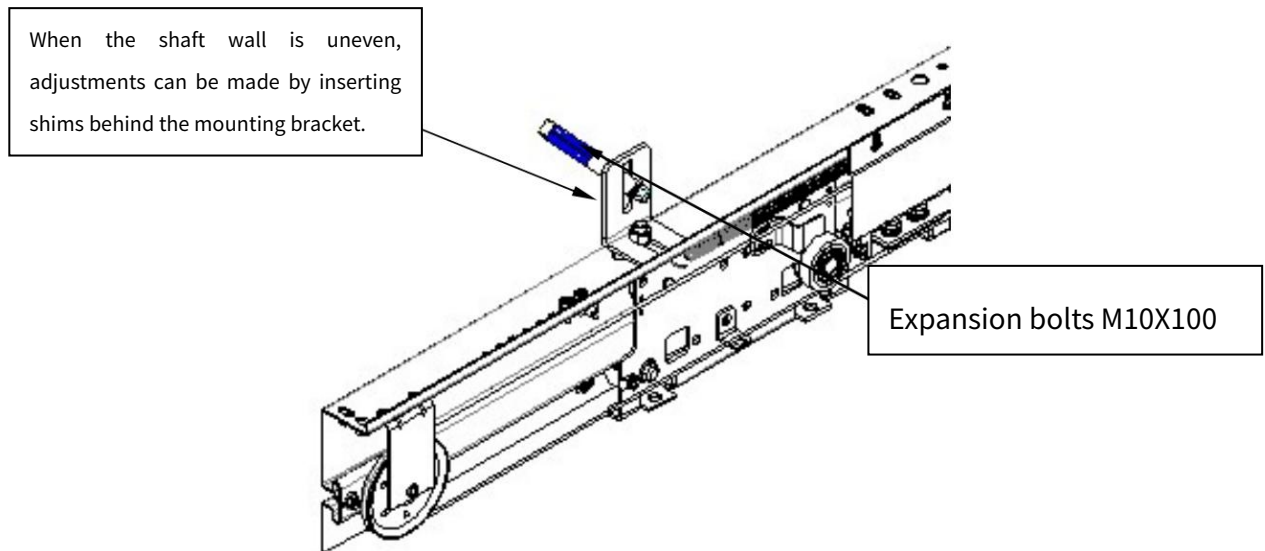
- 1、 Connect the header mounting bracket to the header



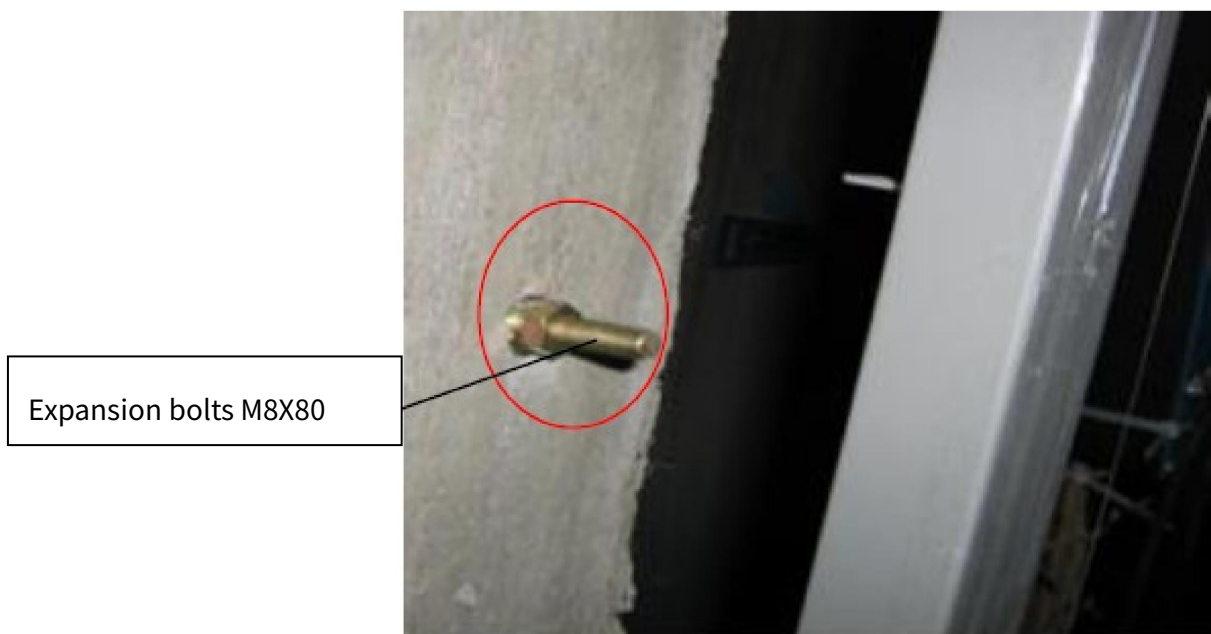
- 2、 Preset the header and connect the header to the jamb header bracket.



3、 Determine the position of the header installation bracket, align the net opening scale lines on both ends of the header with the door sample line, and then install expansion bolts to secure the header. Installation and adjustment of hanging panels and door panels

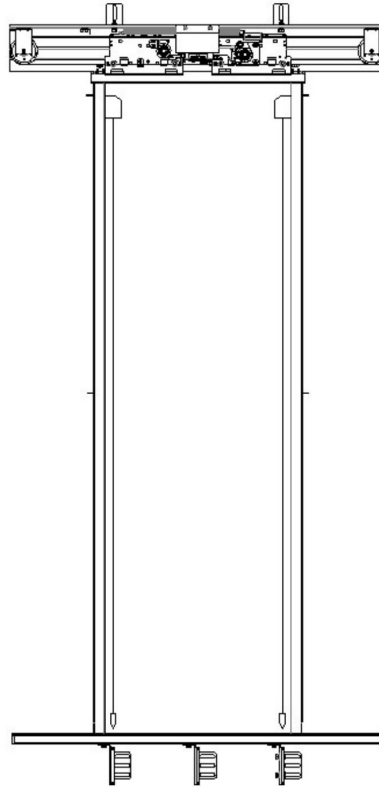


4、 Install expansion bolts at the corresponding positions of each fixed foot of the door pocket on the shaft wall to prepare for fixing the jamb.



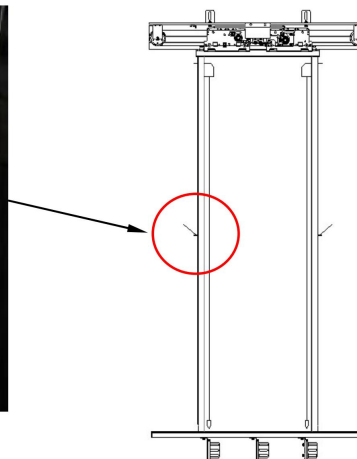
5、 Adjust the verticality of the jamb.

Hang line pendants on the door jamb pillars and adjust the verticality of the front, back, left, and right jamb pillars to be less than 1/1000



6、 Fixing the jamb

Use round steel welding to connect the Jamb fixed foot with the expansion bolts on the sofa cover wall, totaling four places on the left and right sides

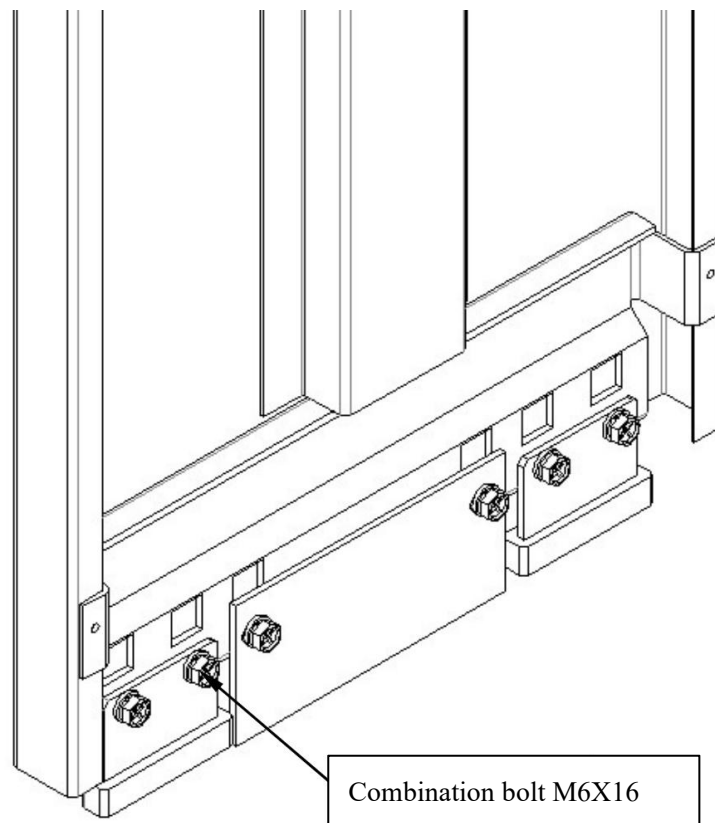


- 7、 Adjust the verticality of the door hanging board.center and header

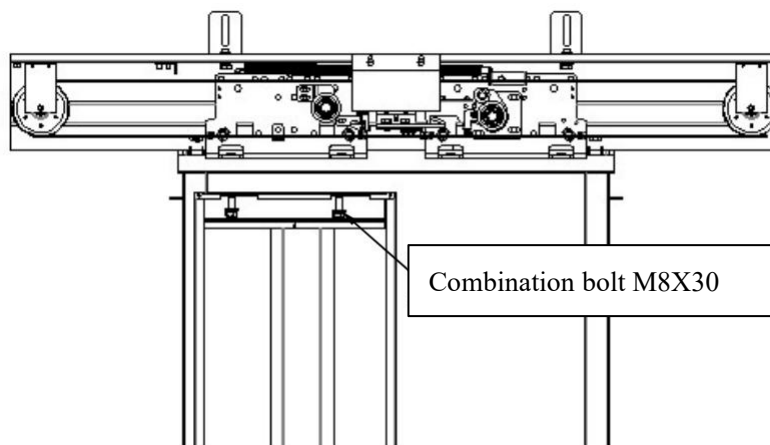
Hall door panel installation

Before installing the door panel, it should be noted that the handling of the door panel should not be vertical, but should be carried and placed horizontally;

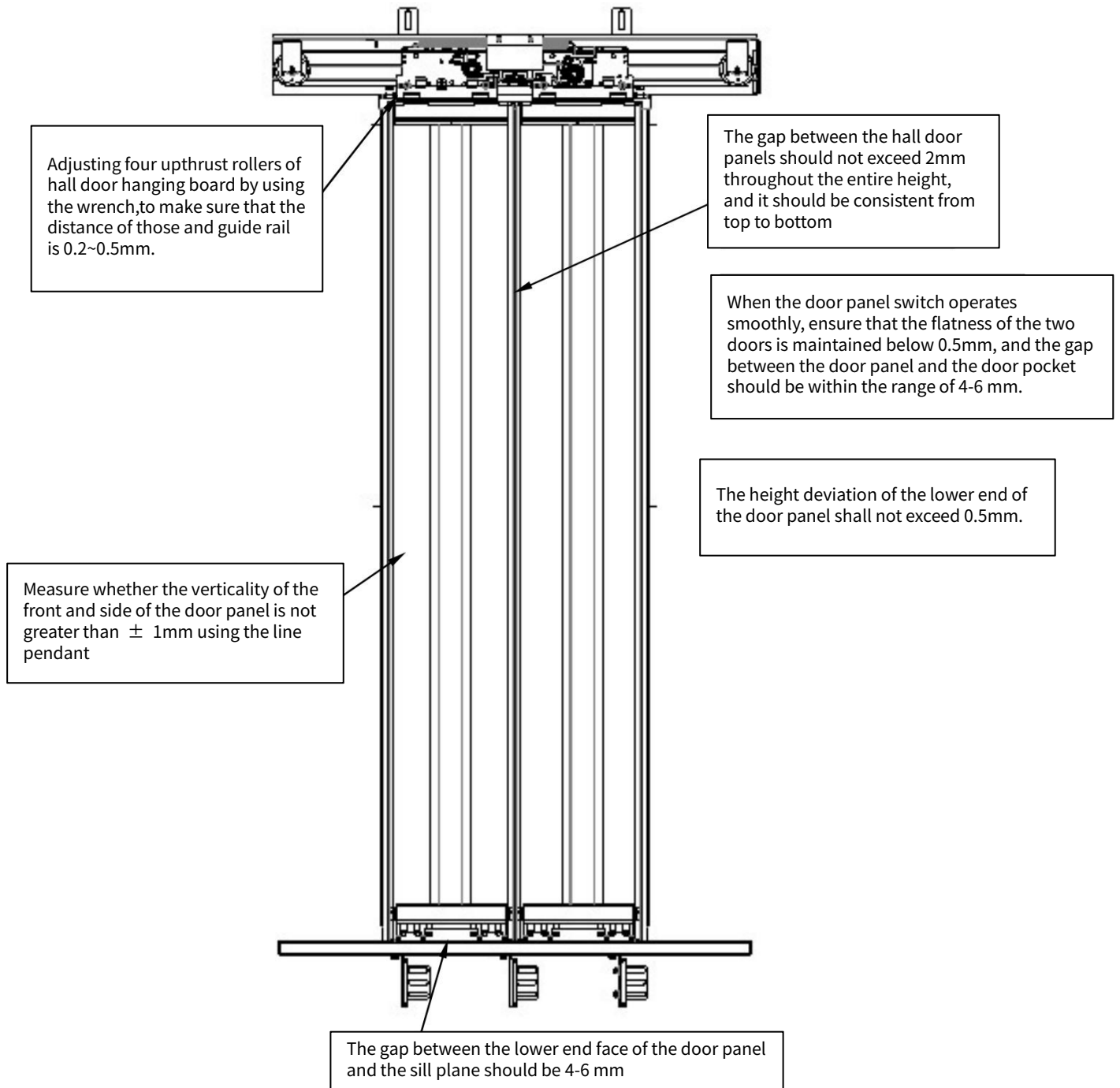
- 1、 First, install the slider on the door panel



- 2、 Connect the door panel and hanging board

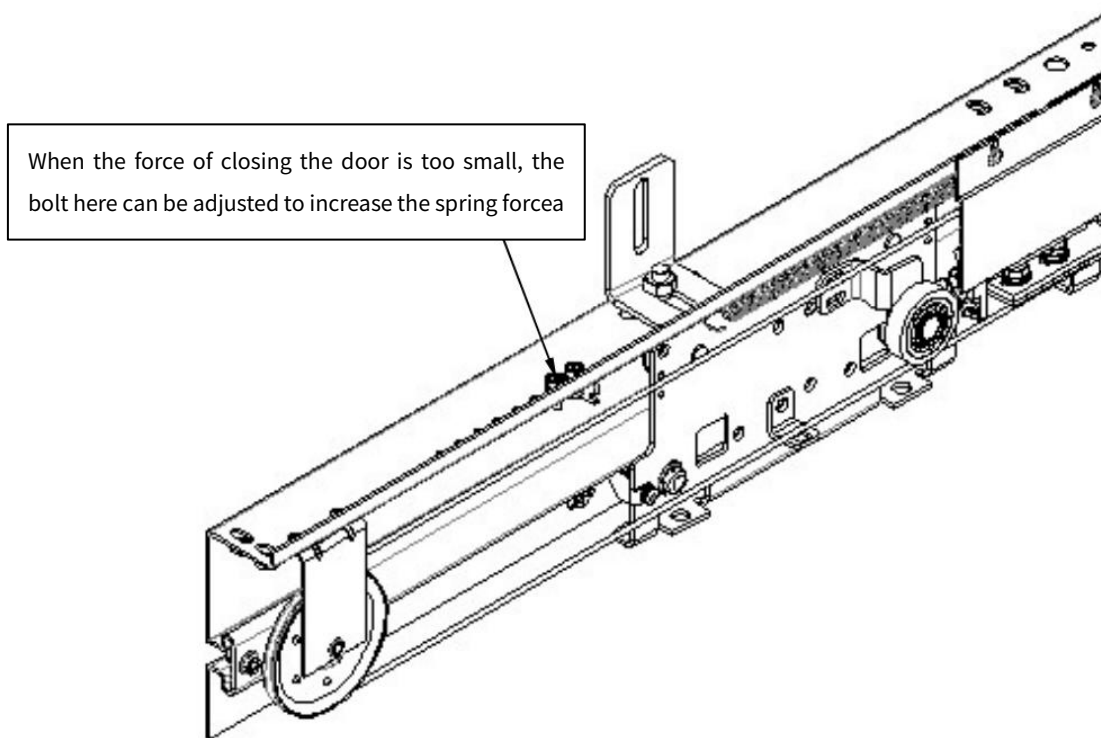


3、 adjusting the hall door panel



Open hall door to the position and make one hall door is on an even height with jamb , check if the other hall door is on an even height with jamb . If there is a deviation, it indicates that there is a deviation between the center of hall door and the center of door jamb . It needs to be readjusted, generally by adjusting the Interlocking steel sire rope connecting the two hall door , and adjusting its left and right position fixed on the hanging board.

Hall Door Forced Closing Device Installation



Hall Door Lock Adjustment

- 1、 The engagement of the locking hook should be between 7-9mm;
- 2、 Align the center of the engagement between the locking hook and the locking tongue in the front and rear directions;
- 3、 The moving contact of the door lock engages with the stationary contact in the center and can be adjusted with a stopper. After the door is closed in place, the compression amount of the contact pad is 2-4mm;
- 4、 For a split door, pull both hall doors simultaneously with a force of 300N along the direction of the door opening. At any point, the distance between the door panels should be $\leq 50\text{mm}$. And both the main and secondary door locks cannot be disconnected;
- 5、 The gap between the hall door lock roller and the car door sill is 5-10mm;
- 6、 The hall door lock is reliably grounded.

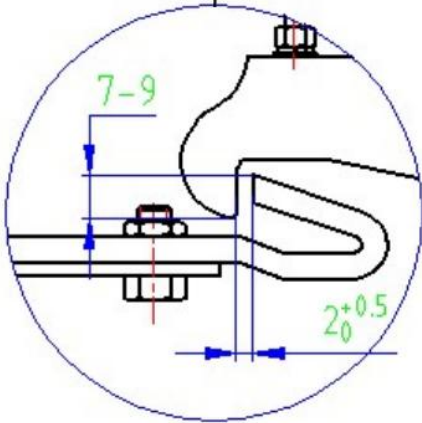
Main door lock contact

After installation, the contact compression is 2.5 ± 1 mm

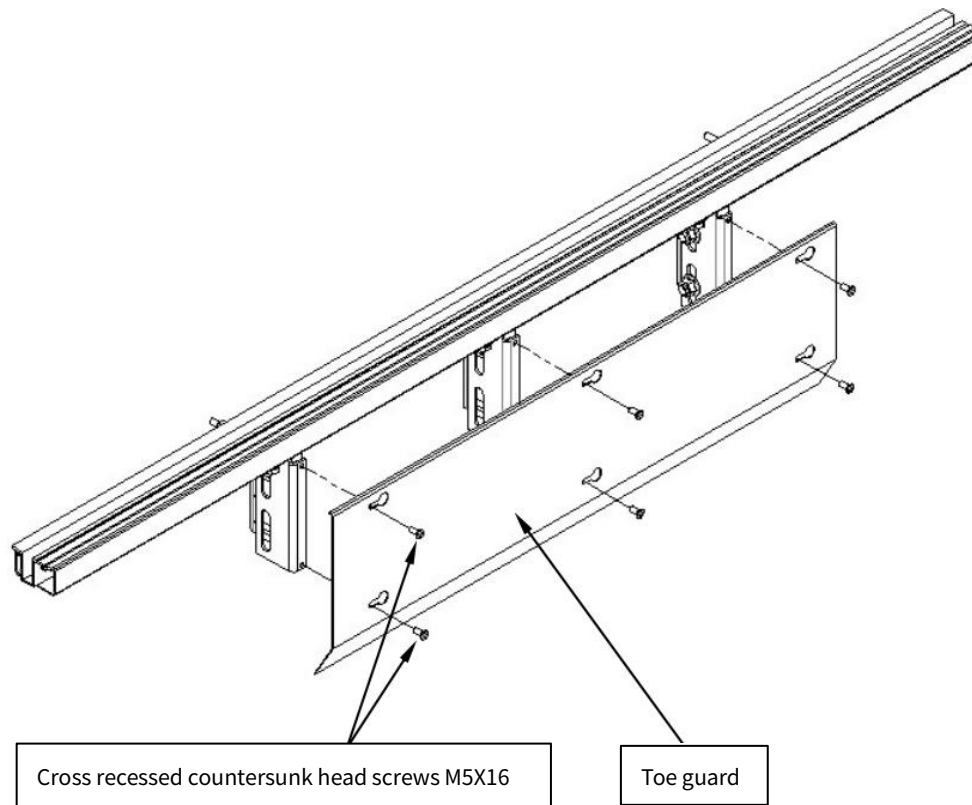
安装后触点
压缩量为 2.5 ± 1 mm

After installation, the contact compression is 3-5 mm

Auxiliary door lock contact



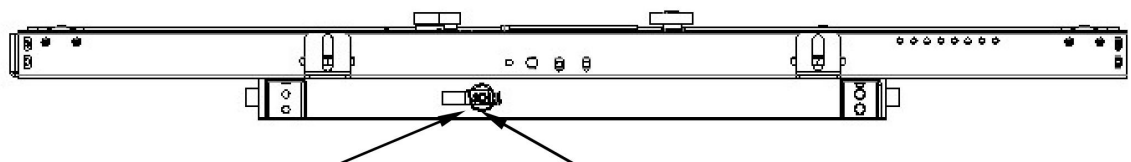
Installation of hall door sill toe guard



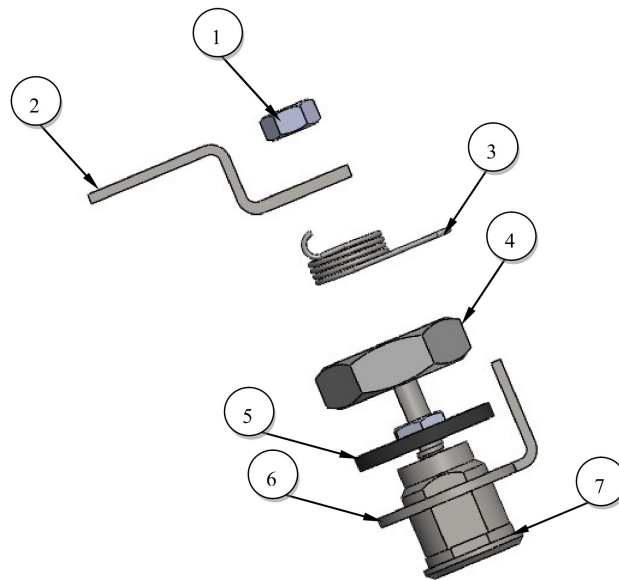
Installation of triangular lock

The triangular lock should be flexible in movement, easy to open and reset, and effective in repeated use.

The warning signs for the opening of the triangle lock should be complete, and the signs should be centered and concentric with the triangle lock hole.

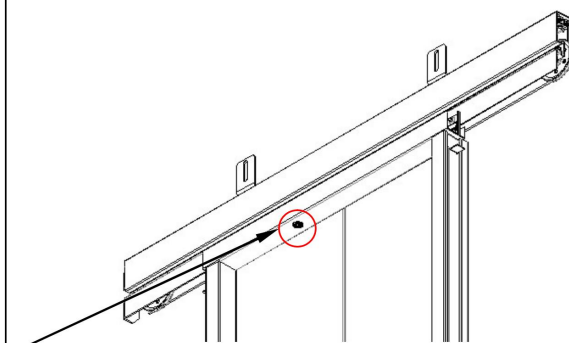


Installation requirements: The installation of the triangle lock should ensure that the lock arm of the door lock is parallel to the door lintel. To install the triangle lock, first remove the torsion spring, fix the lock cylinder, and reinstall the torsion spring (if the lock cylinder connection is loose, it will result in the inability to open the door)

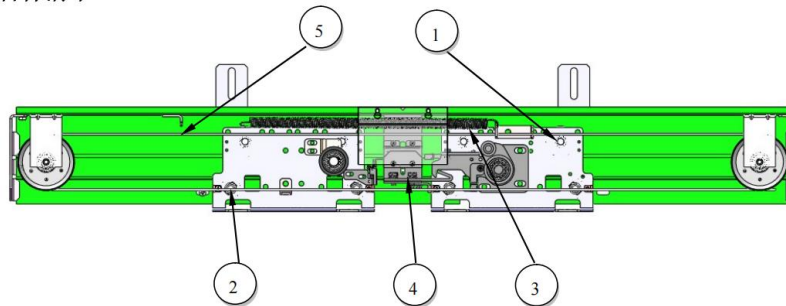


Triangle lock installation: First, confirm that the lock arm of component 2 is parallel to the direction of the door lintel, confirm the position of the lock cylinder, remove components 1, 2, 3, 4, 5, and 6, and install component 7 lock cylinder component on the door lintel. Reverse the installation of component 6 washer and component 5 rubber washer, and fix them with 4 nuts. After the lock cylinder is fixed, one end of the torsion spring of component 3 is connected to the washer of component 6, and the other end is connected to the locking arm of component 2. The torsion spring is installed on the lock cylinder, and the locking arm of component 2 is fixed by the nut of component 1. Flexible rotation and complete installation.

Disassembly sequence: 1-2-3-4-4-5-6-7 Installation sequence: 7-6-5-4-3-2-1



Spare parts list



No	Component drawing number	Name
1	XTA3117AJM001	Hanging board roller
2	XTB3117AGW001	Adjusting roller
3	XTA4033AAV001	Bolt
4	XTB3291ADG033	Stop block
5	XTA3214AJK	Wire rope assembly
6	XTB4295AAV002	Slider

Installation tools

No	Installation steps	Installation tools
1	Installation of hall door sill	tape
2	Installation of jamb	Steel Rulers
3	Installation of hall door header	marking pen
4	Installation of hall door panel	M13 wrench
5	Installation of Hall Door Forced Closing Device	impact drill
6	Adjustment of hall door lock	line pendant
7	Installation of hall door sill toe guard	levelling instrument
8	Installation of triangular lock	M18 electric welding machine